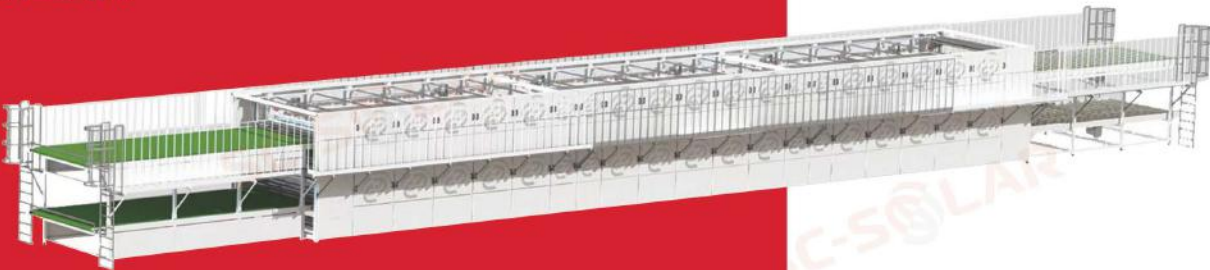


LAMINATOR

层压机



晟成层压机机型主要包括单层单腔/双腔/三腔，双层单腔/双腔/三腔，三层单腔/双腔/三腔等，可根据客户要求定制。

The main model includes single-layer& single-chamber/double-chamber/three-chamber laminator, double-layer & double-chamber/three-chamber laminator, three-layer & single-chamber/ double-chamber/three-chamber laminator etc., it can be customized according to customer requirements.

层压机加热方式主要有油加热和电加热，可根据客户需求定制规格型号。

Laminator heating method: oil heating and electric heating, other sizes as per customer requirements will be customized.



单层双腔层压机
Single-layer& double-chamber
Laminator



双层双腔层压机
Double-layer& double-chamber
Laminator



三层双腔层压机
Three-layer& double-chamber
Laminator

设备技术性能

操作便捷简单
台面温度均匀性高
设备运行更稳定可靠
节能，清洁，环保
高配置，成品率高



Functionality

Easy operation
Excellent temperature uniformity
More stable and reliable performance
Power saving, clean, environmental protection
Higher configuration, high yield



技术参数 Specifications

设备型号 Model	2700mm*8700mm		2700mm*9400mm		2700mm*10000mm	
	OL	EL	OL	EL	OL	EL
加热方式 Heating method	油加热 Oil heating	电加热 Electric heating	油加热 Oil heating	电加热 Electric heating	油加热 Oil heating	电加热 Electric heating
作业温度 Working temperature	室温RT-180℃		室温RT-180℃		室温RT-180℃	
温度均匀性 Temperature uniformity	±1.5℃		±1.5℃		±1.5℃	
温度精度 Temperature accuracy	±1℃		±1℃		±1℃	
传输精度 Transmission accuracy	±3mm		±3mm		±3mm	
成品良率 Yield	99.99%		99.99%		99.99%	
工作噪音 Noise	≤80dB		≤80dB		≤80dB	