

# AUTO FRAME LOADER

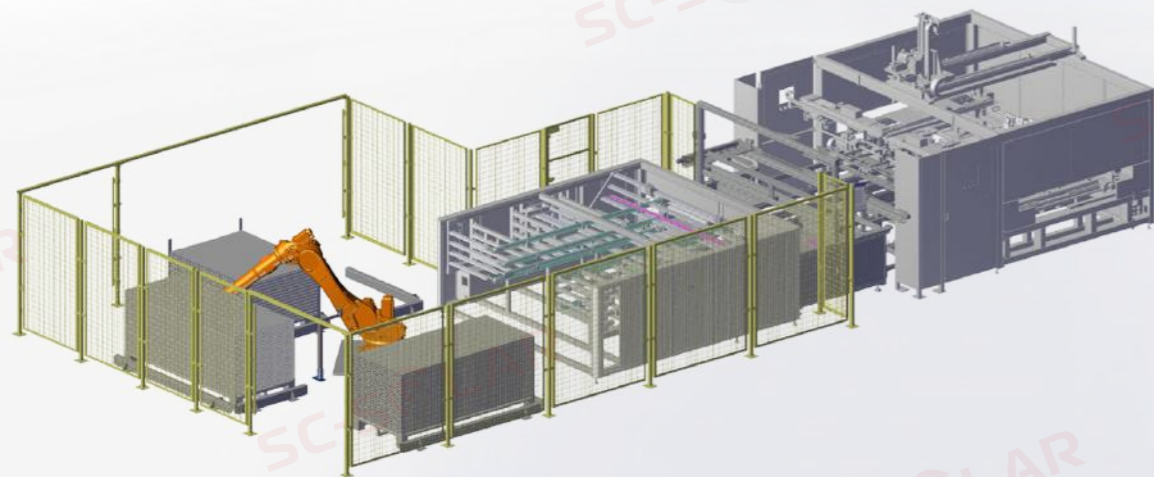
## 整托边框上料机

### 功能描述

- 实现边框的自动检测、抓取、上料、分料。
- 实现无人上料，换料不停机等。
- 可满足客户不同边框要求，兼容性强。
- 视觉检测，挑出不良产品。
- 缓存70套边框，满足换料不停机。
- 可以人工换料，兼容AGV小车自动换料。

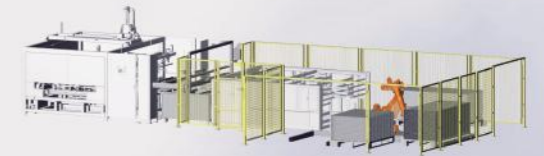
### Features

- Realize automatic detection, grasping, feeding and dividing of the frame.
- Realize unmanned feeding, refueling without stopping, etc.
- Can meet the different requirements of frames, strong compatibility.
- Visual inspection, pick out defective products.
- Cache 70 sets of frames to meet the non-stop refueling.
- Can be manual refueling, compatible with AGV car automatic refueling.



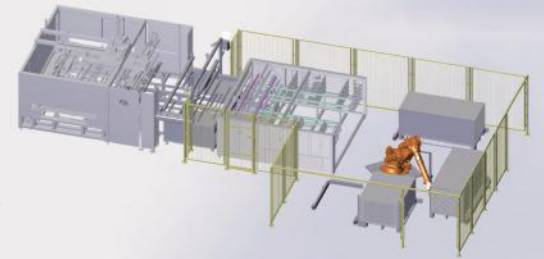
### 设备技术性能

视觉拍照引导，自动抓取边框。  
正常一次性抓取8根边框，如遇边框之间间隙大，可以多次抓取边框，满足智能抓取，减少人工干涉。  
视觉拍照可以检测出不良边框。  
缓存70套边框，一次性自动送出有规律的4根。满足下一工位生产。  
提高产线自动化率，为无人车间做准备。



### Functionality

Guided by the visual system, the machine can automatically clamp the frame.  
Under normal circumstances, 8 frames can be gripped at one time, and if there is a big gap between them, the frames can be captured several times in ways that reduce manual intervention.  
The visual system is designed to detect NG frames.  
The machine with buffer capacity of 70 sets of frames has the potential to feed 4 frames at one time to facilitate next work station.  
This equipment promises to make the assembly line more automated, thus laying the groundwork for the ongoing unmanned factory.



### 技术参数 Specifications

项目 Item	数值 Value
长边框 Long frame	1650-2520(mm)
短边框 Short frame	990-1450(mm)
节拍 Cycle time	≤16s
兼容边框B面尺寸 Compatible B-side frame size	30-35(mm)
电源 Power requirement	AC380V±5%, 3P+1N+1PE, 20A, 50/60Hz
功率 Power	15kW
工作气压 Air pressure	0.6-0.8(MPa)
噪音 Noise	≤70dB
外形尺寸 Dimension(L×W×H)	6000*5000*4000(mm)
重量 Weight	约2500kg